

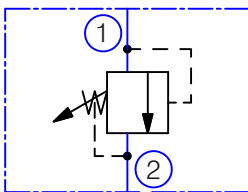
DESCRIPTION

A screw-in , cartridge-style , direct-acting , differential area operated-type , hydraulic relief valve intended for high flow circuits requiring low internal leakage.

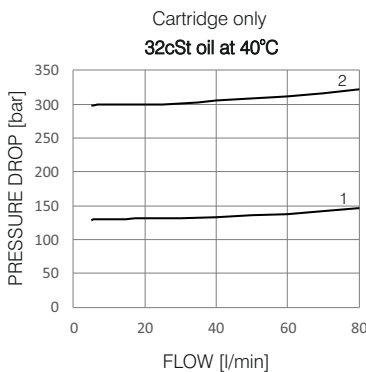
OPERATION

The RM80... blocks flow from 1 to 2 until sufficient pressure is present at 1 to force the spring-opposed poppet from its seat.

SYMBOL

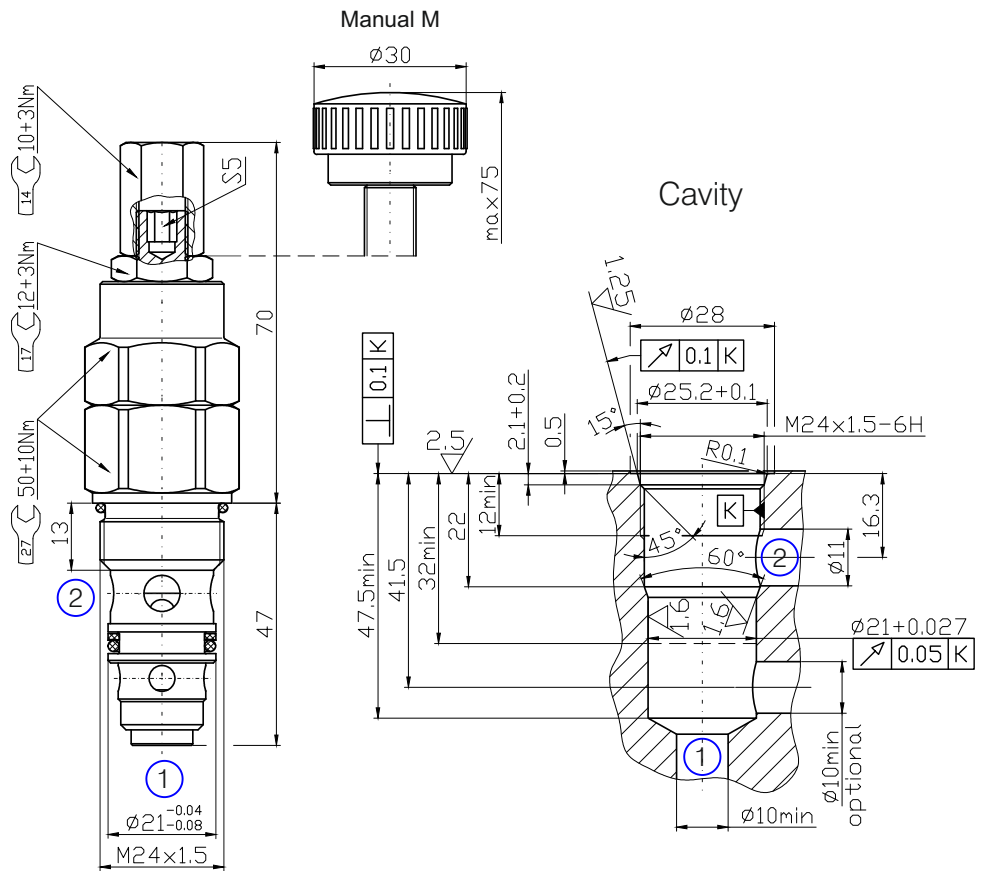


PERFORMANCE



The Performance Chart illustrates flow handling capacity at max. setting for each spring range option. Pressure rise will vary with spring (range) and with setting within range due to flow forces.

DIMENSIONS



ORDERING CODE

RM80 -

Relief valve

Pressure adjustment range:

- 10...130bar - 1
- 20...300bar - 2

Adjustment:

- omit - hexagon screw
- M - manual

TECHNICAL DATA

| | | |
|---|-----------|---------------|
| Pressure adjustment range: | RM80-1... | 10... 130 bar |
| | RM80-2... | 20...300 bar |
| Rated flow - See Performance Chart | | 80l/min |
| Working liquid-hydraulic oils with characteristics: | | |
| -viscosity | | 10...400 cSt |
| -degree of filtration | | 0,025 mm |
| -temperature | | -20... +80°C |